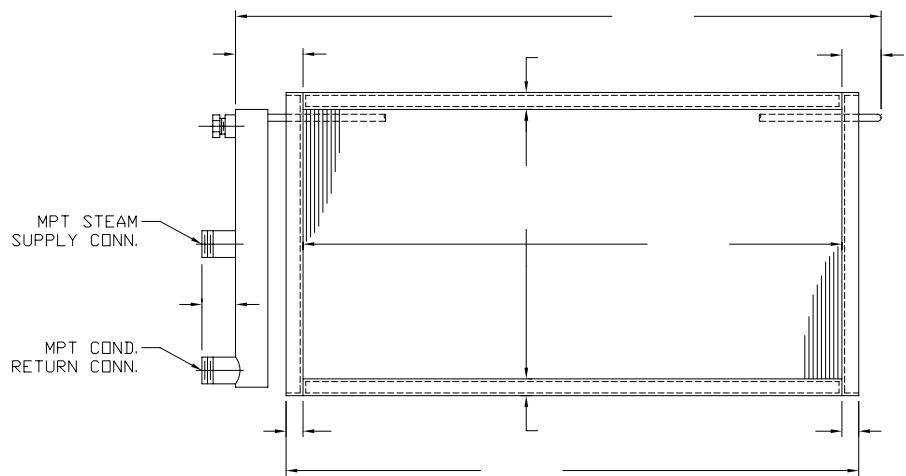
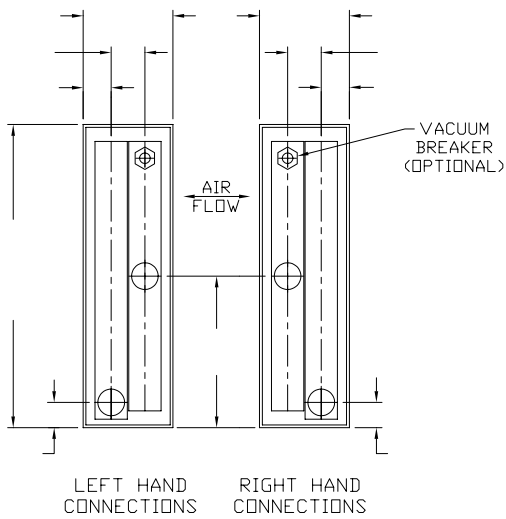


TUBING (MAT'L./SIZE) = _____ S.C.F.M. = _____
 EN.T.AIR TEMP. = _____ °F
 FINS (MAT'L.) = _____ LVG.AIR TEMP. = _____ °F
 FINS PER INCH = _____ STEAM PRESSURE = _____ (PSIG)
 AIR FRICTION = _____ (IN INCHES OF WATER)
 ROWS DEEP = _____ (IN DIRECTION OF AIR FLOW)



ENCLOSED HEADERS AND RETURN BENDS AVAILABLE



			CUSTOMER ORDER NO.	ANDERSON SNOW SHOP ORDER NO.	DRAWN BY	TYPE "U" U-BEND STEAM COIL FOR (4 OR 8 ROW)	
DATE	SYM.	REVISION RECORD	JOB NAME			ANDERSON-SNOW CORPORATION -SCHILLER PARK, ILLINOIS 60176-	
		DR.	CK.			DRAWING NO. CAT.009	
PRELIMINARY AIR TEST		PSIG	AIR UNDER WATER			ALL DIMENSIONS ARE ± 1/8"	
FINAL FAB AIR TEST		PSIG	AIR UNDER WATER				
FINAL TEST PRESSURES		PSIG					
MAXIMUM OPERATING PRESSURE		PSIG	°F				