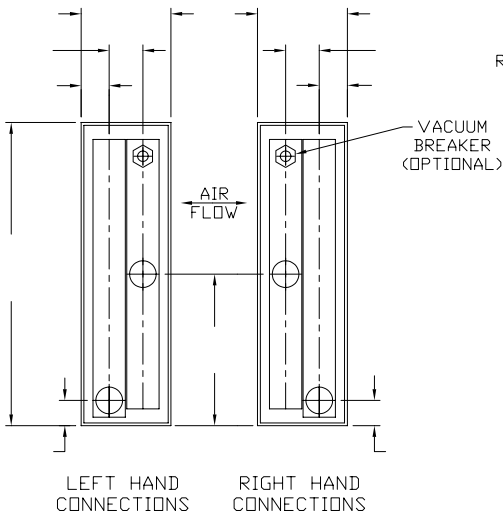
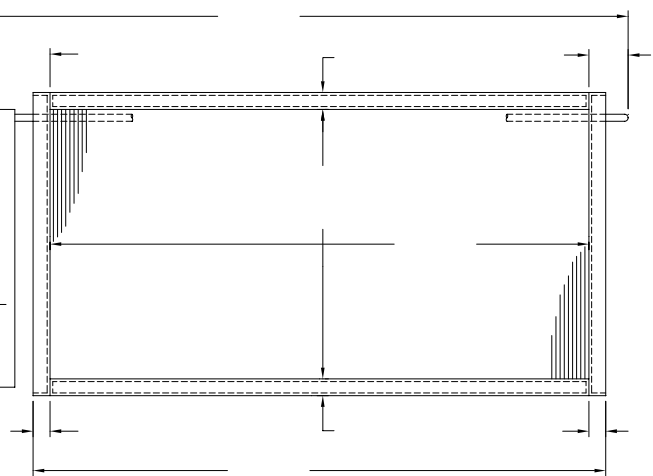


TUBING (MAT'L./SIZE) = _____ S.C.F.M. = _____
 FINS (MAT'L.) = _____ ENT.AIR TEMP. = _____ °F
 FINS PER INCH = _____ LVG.AIR TEMP. = _____ °F
 ROWS DEEP = _____ STEAM PRESSURE = _____ (PSIG)
 (IN DIRECTION OF AIR FLOW) AIR FRICTION = _____ (IN INCHES OF WATER)



ENCLOSED HEADERS AND RETURN BENDS AVAILABLE

MPT STEAM SUPPLY CONN.
 MPT COND. RETURN CONN.



				CUSTOMER ORDER NO.	ANDERSON SNOW SHOP ORDER NO.	DRAWN BY	TYPE "U" U-BEND STEAM COIL FOR (1 OR 2 ROWS)	
DATE SYM. REVISION RECORD DR. CK.				JOB NAME			ANDERSON-SNOW CORPORATION -SCHILLER PARK, ILLINOIS 60176-	
TEST PRESSURES							DRAWING NO. CAT.008	
PRELIMINARY AIR TEST PSIG AIR UNDER WATER							ALL DIMENSIONS ARE ± 1/8"	
FINAL FAB AIR TEST PSIG AIR UNDER WATER								
FINAL TEST PRESSURES PSIG								
MAXIMUM OPERATING PRESSURE PSIG °F								